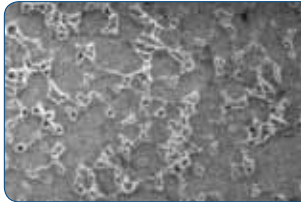
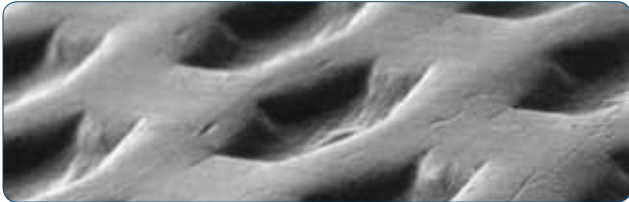
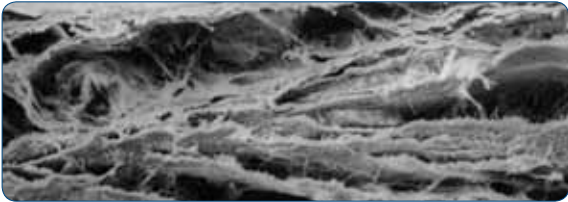


CYTOPLAST[®]

MEMBRANES AND SUTURES



www.implantdirect.com

Innovation.

Quality.

Service.

Value.

Resorbable Membranes

CYTOPLAST® RTM COLLAGEN

TYPE I BOVINE COLLAGEN RESORBABLE TISSUE MATRIX

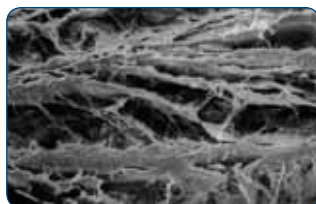
- Resorbable; eliminates second surgery
- Highly cross-linked and stable structure exhibits unusually high tensile strength
- Safe; manufactured from highly purified Type I bovine achilles tendon
- Layered construction allows cellular ingrowth of outer layer, but inner layers help prevent cellular and bacterial downgrowth
- Longer predictable resorption time of 26 to 38 weeks
- Guides healing of bone and surrounding tissue
- High mechanical strength for membrane stabilization using either sutures or resorbable tacks
- Excellent handling when wet, and either side can be placed against the defect
- Optimized flexibility and rigidity for better maintenance of space

COMMON APPLICATIONS

- Periodontal defects
- Sinus lift osteotomies
- Repair of access windows
- Soft tissue augmentation
- Periapical lesions



This cross sectional SEM view demonstrates the multi-layer construction allowing tissue integration in outer layer while preventing direct passage of bacteria and epithelial cells.



CYTOPLAST® RTM Collagen



RTM1520
15mm x 20mm
(2 membranes/box)



RTM2030
20mm x 30mm
(2 membranes/box)



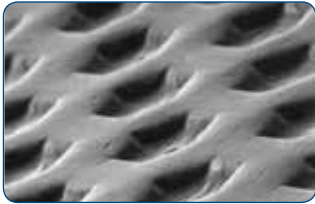
RTM3040
30mm x 40mm
(2 membranes/box)

*Products shown are actual size.

NON RESORBABLE Membranes

THE ORIGINAL, PATENTED, HIGH-DENSITY PTFE MEMBRANE

- 100% Medical Grade PTFE membrane
- Non-resorbable, yet easily removed without surgery
- Primary closure not required
- < 0.3 µm pore size; impervious to bacteria
- No risk of bacterial invasion due to exposure of membrane
- No disruption of healing due to resorption process
- Biologically inert and chemically non-reactive



This SEM view shows the micro-machined textured surface, which increases the area available for cellular attachment by 250% without increasing porosity.



CYTOPLAST® Ti-250 Anterior Narrow

Ti250AN-1 (1 membrane/box)
Ti250AN-2 (2 membranes/box)

Ideal for narrow single-tooth extraction sites, especially where one or more bony walls are missing.



12mm x 20mm

CYTOPLAST® Ti-250 Anterior Singles

Ti250AS-1 (1 membrane/box)
Ti250AS-2 (2 membranes/box)

Ideal size and shape for single-tooth extraction sites, especially where one or more bony walls are missing.



14mm x 24mm

CYTOPLAST® Ti-250 Buccal

Ti250BL-1 (1 membrane/box)
Ti250BL-2 (2 membranes/box)

Ideal for use in large buccal defects. The pilot holes create more secure membrane stabilization.



17mm x 25mm

CYTOPLAST® Ti-250 Posterior Singles

Ti250PS-1 (1 membrane/box)
Ti250PS-2 (2 membranes/box)

Designed for grafting posterior extraction sites and limited ridge augmentation.



20mm x 25mm

CYTOPLAST® Ti-250 Posterior Large

Ti250PL-1 (1 membrane/box)
Ti250PL-2 (2 membranes/box)

Designed for grafting large bony defects, including ridge augmentation



25mm x 30mm

CYTOPLAST® Ti-250 XL

Ti250XL-1 (1 membrane/box)
Ti250XL-2 (2 membranes/box)

Ideal for grafting very large bony defects, especially vertical and horizontal ridge augmentation.



30mm x 40mm

CYTOPLAST® Ti-250 Perio



13mm x 19mm



13mm x 18mm

Anterior

Ti250AP-1 (1 membrane/box)
Ti250AP-2 (2 membranes/box)

Posterior

Ti250PP-1 (1 membrane/box)
Ti250PP-2 (2 membranes/box)

Designed to fit periodontal defects in the anterior and posterior.

*Products shown are actual size.

CYTOPLAST® GBR-2530

25mm x 30mm
(4 membranes/box)

CYTOPLAST® GBR-1224

12mm x 24mm
(10 membranes/box)

CYTOPLAST® TXT-2530

25mm x 30mm
(4 membranes/box)

CYTOPLAST® TXT-1224

12mm x 24mm
(10 membranes/box)

CYTOPLAST® PTFE SUTURE

BENEFITS

- Non-resorbable, 100% Medical Grade PTFE
- Monofilament construction eliminates bacterial wicking
- Biologically inert & chemically non-reactive
- Not subject to weakening by tissue enzymes
- Excellent soft tissue response
- Soft; increased patient comfort
- Great handling, knot-tying & knot-holding characteristics

COMMON APPLICATIONS

- Bone grafting procedures
- Guided tissue regeneration
- Implant surgery
- Periodontal surgery
- Ridge augmentation
- Soft tissue grafts



CS-04

18.7mm reverse cutting needle, which is popular for procedures where a longer needle is desired.

Size: USP 2-0
Needle: 18.7mm, 3/8 Circle Reverse Cutting
12 per box



CS-05

Indicated for dental implant and bone grafting procedures.

Size: USP 3-0
Needle: 16.3mm, 3/8 Circle Reverse Cutting
12 per box



CS-051819

Indicated for dental implant and bone grafting procedures.

Size: USP 3-0
Needle: 19mm, 3/8 Circle Reverse Cutting
12 per box



CS-06 RC

Most popular of the smaller CS-06 sutures. 16.3mm reverse cutting needle. Often used for dental implant and bone grafting procedures where a very small diameter suture is desired.

Size: USP 4-0
Needle: 16.3mm, 3/8 Circle Reverse Cutting
12 per box



CS-06 PERIO

12.7mm taper point needle. Often used on soft tissue grafts and suturing of delicate tissues that require an atraumatic needle.

Size: USP 4-0
Needle: 12.7mm, 1/2 Circle Taper Point
12 per box



CS-06 PREMIUM

Offers over 50% longer cutting edges, giving needles a more slender defined shape that greatly decreases the force applied to the needle during surgery.

Size: USP 4-0
Needle: 13.1mm, 3/8 Circle Reverse Cutting
12 per box

www.implantdirect.com

USA 1-888-649-6425/1-714-516-7800

EUROPE 00800-4030-4030

CANADA 1-604-730133

ISRAEL 972-3-6099951